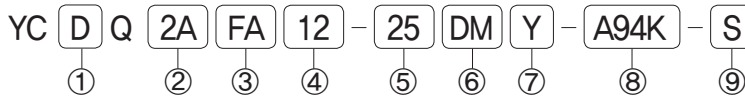


- ◆ 내구성향상
- ◆ 다양한 스트로크
- ◆ 콤팩트한 디자인
- ◆ 알루미늄합금 튜브적용
- ◆ 무급유 타입
- ◆ 로드흔들림 개선

◆ 주문형식 표기방법



① 마그네트

무기호 : 자석 비내장
D : 자석 내장형

② 부착사양

2A : 관통 양단탭(표준형)
2B : 관통취부형(관통형)

③ 지지금구

FA : 로드축 플랜지부착
FB : 헤드축 플랜지 부착
CB : 2산 클레비스부착
LB : 푸트형 부착

④ 튜브내경

12 : 실린더 내경 12mm
16 : 실린더 내경 16mm
20 : 실린더 내경 20mm
25 : 실린더 내경 25mm
32 : 실린더 내경 32mm
40 : 실린더 내경 40mm
50 : 실린더 내경 50mm
63 : 실린더 내경 63mm
80 : 실린더 내경 80mm
100 : 실린더 내경 100mm
125 : 실린더 내경 125mm

⑤ 실린더 표준 스트로크

내경 : Ø12, Ø16
- 5, 10, 15, 20, 25, 30
내경 : Ø20, Ø25
- 5, 10, 15, 20, 25, 30, 35, 40, 45, 50
내경 : Ø32, Ø40, Ø50, Ø63, Ø80, Ø100, Ø125
- 5, 10, 15, 20, 25, 30, 35, 40, 45, 50, 75, 100

⑥ 나사형태

D : 로드 암나사
DM : 로드 슛나사

⑦ 부착금구

Y : 2산 너클조인트
I : 1산 너클조인트

⑧ 오토스위치

A94K : 오토스위치 부착

⑨ 오토스위치 추가호

무기호 : 2개부착
S : 1개 부착
N : N개 부착

◆ 오토스위치 품번

품번	종류	부하전압	사양
D-A94K	유접점 (2선식)	DC5V ~ AC230V	수평형 그로메트
D-A94K-V			수직형 그로메트
D-A94X	무접점 2선식	DC24V	2색 LED 진단표시등
D-A94X-N	무접점 3선식	DC24V NPN	
D-A94X-P	무접점 3선식	DC24V PNP	

※ 오토스위치 그로메트 : D-A94K : 1M, D-A94K-L3 : 3M, D-A94K-L5 : 5M

◆ 기타행정 제작

사양	행정	비고
YC(D)Q	비규격 행정	스페이서를 삽입

예) YCDQ2A 40-55 DM-A94K
- 75스트로크 표준품에 스페이서 20mm 삽입

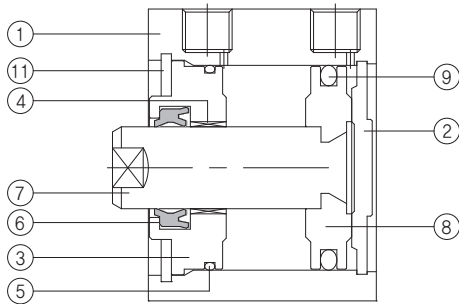


◆ 제품 사양

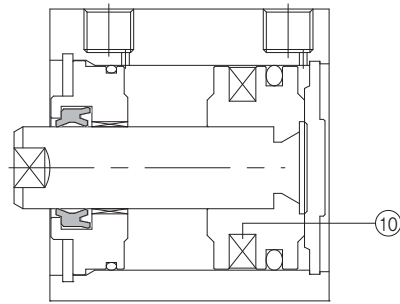
작동방식	복동 편로드
사용유체	공기 및 불활성 가스
최저사용압력	0.05MPa(0.5 kgf/cm ²)
최고사용압력	1.0MPa(10 kgf/cm ²)
보증내압력	1.5MPa(15 kgf/cm ²)
쿠션	없음
자석내장	옵션
사용 피스톤 속도	50 ~ 750 mm/s
주위 및 사용유체 온도	5 ~ 60°C (41 ~ 140°F)
급유	무급유 (급유시 ISO VG32#)

◆ 실린더 내부구조

자석 비내장



자석 내장



◆ 구성부품

번호	부품명	재질	비고
①	튜브	알루미늄 합금	경질 알루미늄
②	헤드 커버	알루미늄 합금	경질 알루미늄
③	로드 커버	알루미늄 합금	경질 알루미늄
④	부쉬		
⑤	O-Ring	NBR	
⑥	로드 패킹	NBR	
⑦	피스톤 로드	탄소강	경질 크롬도금
⑧	피스톤	알루미늄 합금	크로메이트
⑨	피스톤 패킹	NBR	
⑩	마그넷	RUBBER	
⑪	멈춤 링	탄소강	

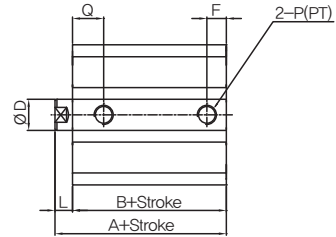
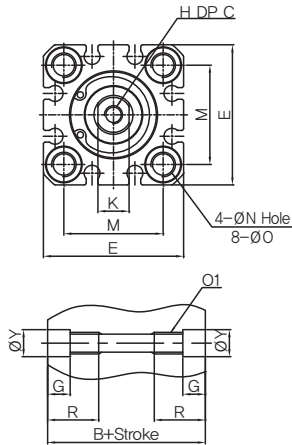
◆ 교환부품 패키징세트

번호	구분	품번	구성패킹
①	Ø12 실린더	YCQ-12-PS	로드패킹 피스톤패킹 로드커버패킹
②	Ø16 실린더	YCQ-16-PS	
③	Ø20 실린더	YCQ-20-PS	
④	Ø25 실린더	YCQ-25-PS	
⑤	Ø32 실린더	YCQ-32-PS	
⑥	Ø40 실린더	YCQ-40-PS	
⑦	Ø50 실린더	YCQ-50-PS	
⑧	Ø63 실린더	YCQ-63-PS	
⑨	Ø80 실린더	YCQ-80-PS	
⑩	Ø100 실린더	YCQ-100-PS	
⑪	Ø125 실린더	YCQ-125-PS	

◆ 실린더 치수도

▶ 기본형 (자석 비내장형, 암나사)

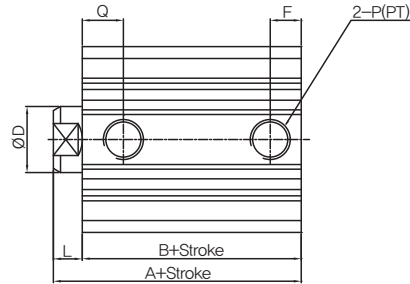
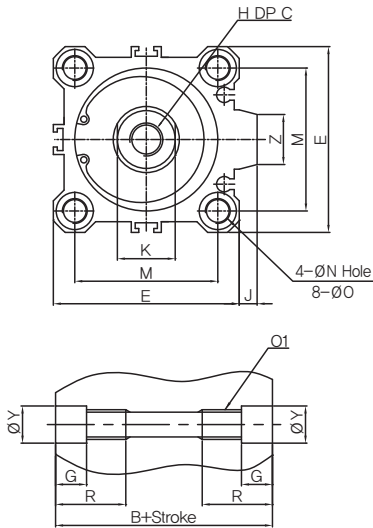
YCQ 2A-Ø12, Ø16, Ø20, Ø25-D



양단 Tap Dimension

튜브 내경	O1	R	G	ØY
Ø12	M4 x 0.7	10	4	6.5
Ø16	M4 x 0.7	10	4	6.5
Ø20	M6 x 1.0	17	7	9
Ø25	M6 x 1.0	17	7	9

YCQ 2A-Ø32, Ø40, Ø50, Ø63, Ø80, Ø100, Ø125-D



양단 Tap Dimension

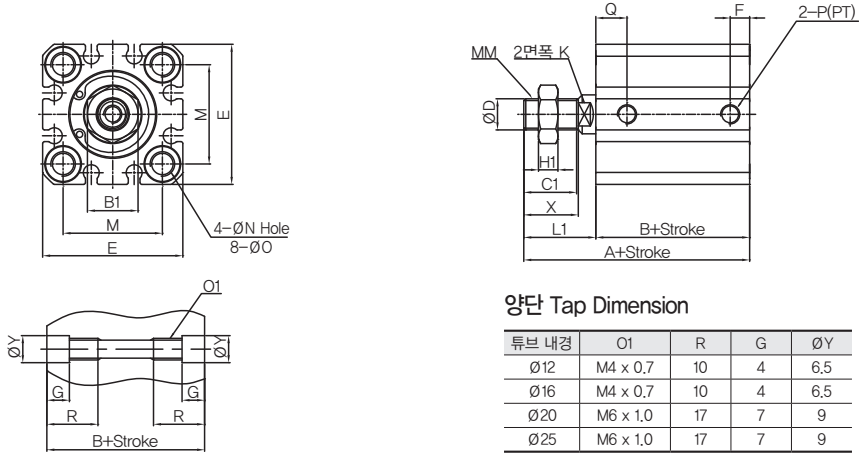
튜브 내경	O1	R	G	ØY
Ø32	M6 x 1.0	17	7	9
Ø40	M6 x 1.0	17	7	9
Ø50	M8 x 1.25	22	8	11
Ø63	M10 x 1.5	28.5	10.5	14
Ø80	M10 x 1.5	35.5	13.5	17.5
Ø100	M12 x 1.75	35.5	13.5	17.5
Ø125	M14 x 2	43.4	18.4	21.2

튜브내경 (mm)	스트로크 범위 (mm)	A	B	D	E	F	H	C	J	K	L	M	N	O	P	Q	Z
Ø12	5 ~ 30	20.5	17	6	25	4.5	M3 x 0.5	6	-	5	3.5	15.5	3.5	6.5 DP 4	M5 x 0.8	7.5	-
Ø16		22	18.5	8	29	4.5	M4 x 0.7	8	-	6	3.5	20	3.5	6.5 DP 4	M5 x 0.8	8	-
Ø20	5 ~ 50	24	19.5	10	36	5	M5 x 0.8	7	-	8	4.5	25.5	5.5	9 DP 7	M5 x 0.8	8	-
Ø25		27.5	22.5	12	40	5	M6 x 1.0	12	-	10	5	28	5.5	9 DP 7	M5 x 0.8	9.5	-
Ø32	5 ~ 100	30	23	16	45	7.4	M8 x 1.25	13	4.5	14	7	34	5.5	9 DP 7	1/8	9.9	14
Ø40		36.5	29.5	16	52	8	M8 x 1.25	13	5	14	7	40	5.5	9 DP 7	1/8	11.5	14
Ø50	5 ~ 100	38.5	30.5	20	64	10.5	M10 x 1.5	15	7	17	8	50	6.6	11 DP 8	1/4	11	19
Ø63		44	36	20	77	10.5	M10 x 1.5	15	7	17	8	60	9	14 DP 10.5	1/4	14	19
Ø80		53.5	43.5	25	98	12	M16 x 2.0	21	6	22	10	77	11	17.5 DP 13.5	3/8	16	26
Ø100		65	53	30	117	18	M20 x 2.5	27	6.5	27	12	94	11	17.5 DP 13.5	3/8	19	26
Ø125		10 ~ 100	99	83	35	142	24.5	M22 x 2.5	30	11	32	16	114	12.5	21.2 DP 18.4	3/8	24.5

◆ 실린더 치수도

▶ 기본형 (자석 비내장형, 슷나사)

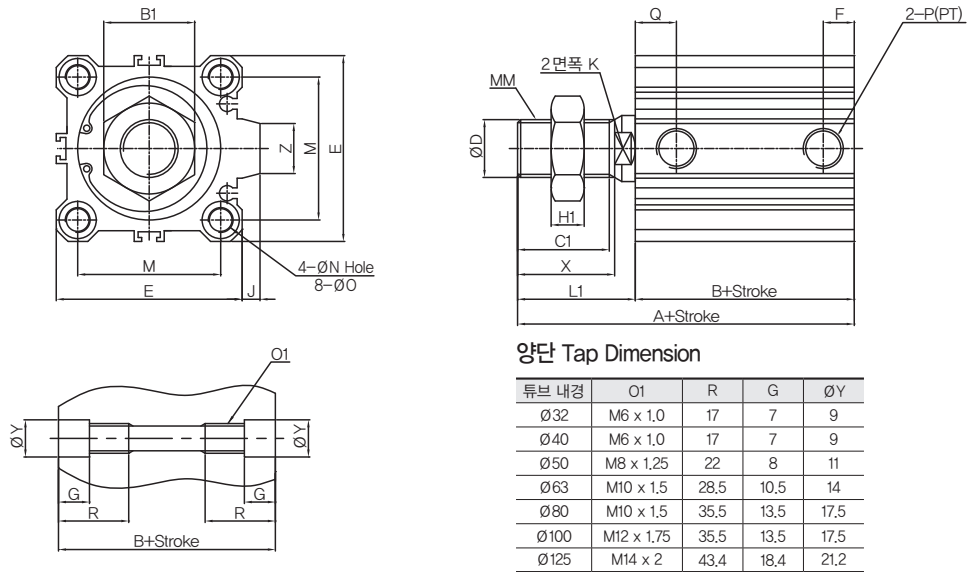
YCQ 2A-Ø12, Ø16, Ø20, Ø25-DM



양단 Tap Dimension

튜브 내경	O1	R	G	ØY
Ø12	M4 x 0.7	10	4	6.5
Ø16	M4 x 0.7	10	4	6.5
Ø20	M6 x 1.0	17	7	9
Ø25	M6 x 1.0	17	7	9

YCQ 2A-Ø32, Ø40, Ø50, Ø63, Ø80, Ø100, Ø125-DM



양단 Tap Dimension

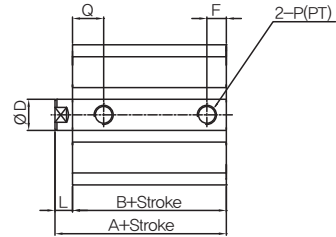
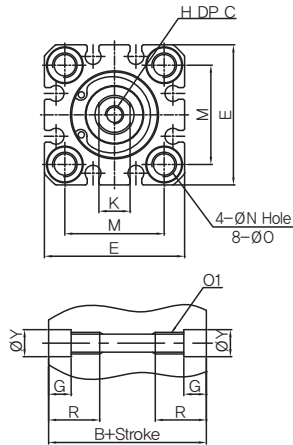
튜브 내경	O1	R	G	ØY
Ø32	M6 x 1.0	17	7	9
Ø40	M6 x 1.0	17	7	9
Ø50	M8 x 1.25	22	8	11
Ø63	M10 x 1.5	28.5	10.5	14
Ø80	M10 x 1.5	35.5	13.5	17.5
Ø100	M12 x 1.75	35.5	13.5	17.5
Ø125	M14 x 2	43.4	18.4	21.2

튜브내경 (mm)	스트로크 범위 (mm)	A	B	D	E	F	MM	J	K	M	N	O	P	Q	Z	C1	X	L1	H1	B1
Ø12	5 ~ 30	31.0	17	6	25	4.5	M5 x 0.8	-	5	15.5	3.5	6.5 DP 4	M5 x 0.8	7.5	-	9	10.5	14	4	8
		34.0	18.5	8	29	4.5	M6 x 1.0	-	6	20	3.5	6.5 DP 4	M5 x 0.8	8	-	10	12	15.5	5	10
Ø20	5 ~ 50	38.0	19.5	10	36	5	M8 x 1.25	-	8	25.5	5.5	9 DP 7	M5 x 0.8	8	-	12	14	18.5	5	13
		45.0	22.5	12	40	5	M10 x 1.25	-	10	28	5.5	9 DP 7	M5 x 0.8	9.5	-	15	17.5	22.5	6	17
Ø32	5 ~ 100	51.5	23	16	45	7.4	M14 x 1.5	4.5	14	34	5.5	9 DP 7	1/8	9.9	14	20.5	23.5	28.5	8	22
		58.0	29.5	16	52	8	M14 x 1.5	5	14	40	5.5	9 DP 7	1/8	11.5	14	20.5	23.5	28.5	8	22
Ø50	5 ~ 100	64.0	30.5	20	64	10.5	M18 x 1.5	7	17	50	6.6	11 DP 8	1/4	11	19	26	28.5	33.5	11	27
		69.5	36	20	77	10.5	M18 x 1.5	7	17	60	9	14 DP 10.5	1/4	14	19	26	28.5	33.5	11	27
		87.0	43.5	25	98	12	M22 x 1.5	6	22	77	11	17.5 DP 13.5	3/8	16	26	32.5	35.5	43.5	13	32
		96.5	53	30	117	18	M26 x 1.5	6.5	27	94	11	17.5 DP 13.5	3/8	19	26	32.5	35.5	43.5	16	41
		141	83	35	142	24.5	M30 x 1.5	11	32	114	12.5	21.2 DP 18.4	3/8	24.5	26	42	45	58	18	46

◆ 실린더 치수도

▶ 기본형 (자석 내장형, 암나사)

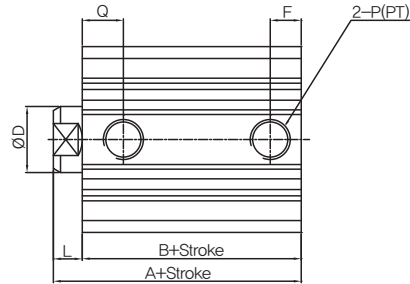
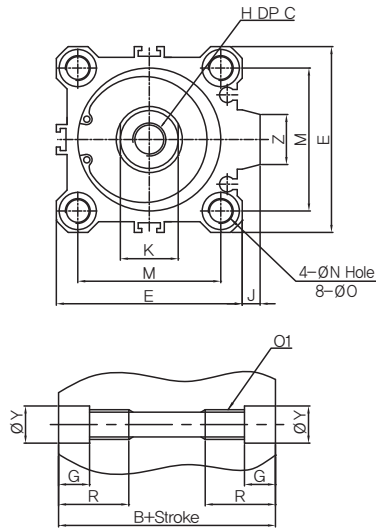
YCDQ 2A-Ø12, Ø16, Ø20, Ø25-D



양단 Tap Dimension

튜브 내경	O1	R	G	ØY
Ø12	M4 x 0.7	10	4	6.5
Ø16	M4 x 0.7	10	4	6.5
Ø20	M6 x 1.0	17	7	9
Ø25	M6 x 1.0	17	7	9

YCDQ 2A-Ø32, Ø40, Ø50, Ø63, Ø80, Ø100, Ø125-D



양단 Tap Dimension

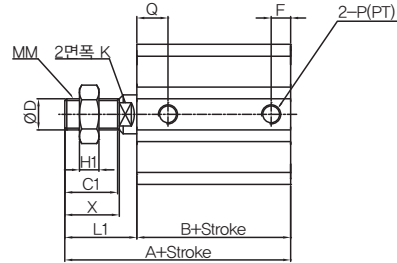
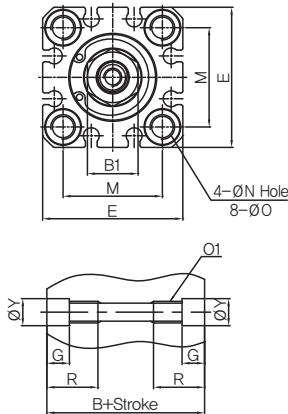
튜브 내경	O1	R	G	ØY
Ø32	M6 x 1.0	17	7	9
Ø40	M6 x 1.0	17	7	9
Ø50	M8 x 1.25	22	8	11
Ø63	M10 x 1.5	28.5	10.5	14
Ø80	M10 x 1.5	35.5	13.5	17.5
Ø100	M12 x 1.75	35.5	13.5	17.5
Ø125	M14 x 2	43.4	18.4	21.2

튜브내경 (mm)	스트로크 범위 (mm)	A	B	D	E	F	H	C	J	K	L	M	N	O	P	Q	Z
Ø12	5 ~ 30	31.5	28	6	25	4.5	M3 x 0.5	6	-	5	3.5	15.5	3.5	6.5 DP 4	M5 x 0.8	7.5	-
Ø16		33.5	30	8	29	4.5	M4 x 0.7	8	-	6	3.5	20	3.5	6.5 DP 4	M5 x 0.8	8	-
Ø20	5 ~ 50	36	31.5	10	36	5	M5 x 0.8	7	-	8	4.5	25.5	5.5	9 DP 7	M5 x 0.8	8	-
Ø25		37.5	32.5	12	40	5	M6 x 1.0	12	-	10	5	28	5.5	9 DP 7	M5 x 0.8	9.5	-
Ø32	5 ~ 100	40	33	16	45	7.4	M8 x 1.25	13	4.5	14	7	34	5.5	9 DP 7	1/8	9.9	14
Ø40		46.5	39.5	16	52	8	M8 x 1.25	13	5	14	7	40	5.5	9 DP 7	1/8	11.5	14
Ø50	5 ~ 100	48.5	40.5	20	64	10.5	M10 x 1.5	15	7	17	8	50	6.6	11 DP 8	1/4	11	19
Ø63		54	46	20	77	10.5	M10 x 1.5	15	7	17	8	60	9	14 DP 10.5	1/4	14	19
Ø80		63.5	53.5	25	98	12	M16 x 2.0	21	6	22	10	77	11	17.5 DP 13.5	3/8	16	26
Ø100		75	63	30	117	18	M20 x 2.5	27	6.5	27	12	94	11	17.5 DP 13.5	3/8	19	26
Ø125		10 ~ 100	99	83	35	142	24.5	M22 x 2.5	30	11	32	16	114	12.5	21.2 DP 18.4	3/8	24.5

◆ 실린더 치수도

▶ 기본형 (자석 내장형, 슷나사)

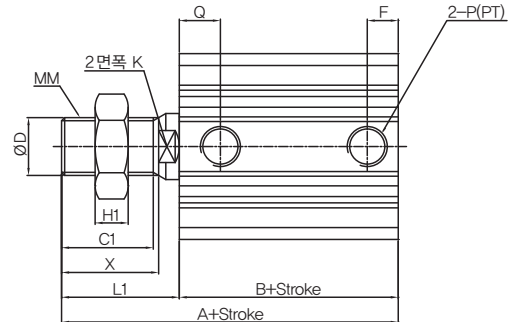
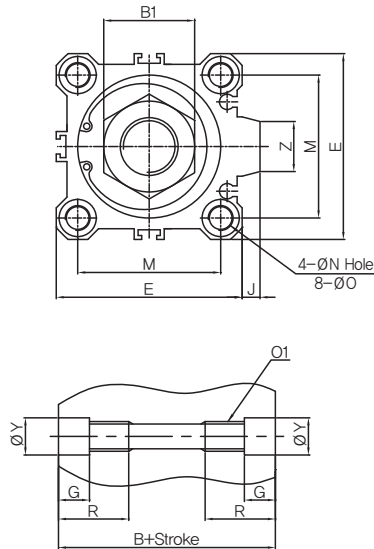
YCDQ 2A-Ø12, Ø16, Ø20, Ø25-DM



양단 Tap Dimension

튜브 내경	O1	R	G	ØY
Ø12	M4 x 0.7	10	4	6.5
Ø16	M4 x 0.7	10	4	6.5
Ø20	M6 x 1.0	17	7	9
Ø25	M6 x 1.0	17	7	9

YCDQ 2A-Ø32, Ø40, Ø50, Ø63, Ø80, Ø100, Ø125-DM



양단 Tap Dimension

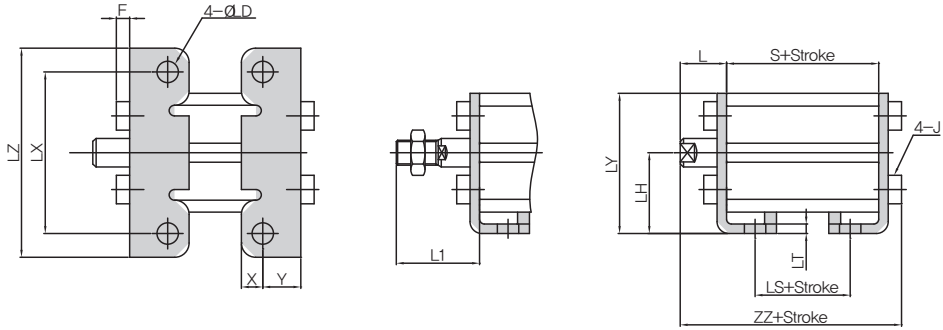
튜브 내경	O1	R	G	ØY
Ø32	M6 x 1.0	17	7	9
Ø40	M6 x 1.0	17	7	9
Ø50	M8 x 1.25	22	8	11
Ø63	M10 x 1.5	28.5	10.5	14
Ø80	M10 x 1.5	35.5	13.5	17.5
Ø100	M12 x 1.75	35.5	13.5	17.5
Ø125	M14 x 2	43.4	18.4	21.2

튜브내경 (mm)	스트로크 범위 (mm)	A	B	D	E	F	MM	J	K	M	N	O	P	Q	Z	C1	X	L1	H1	B1
Ø12	5 ~ 30	42	28	6	25	4.5	M5 x 0.8	-	5	15.5	3.5	6.5 DP 4	M5 x 0.8	7.5	-	9	10.5	14	4	8
		45.5	30	8	29	4.5	M6 x 1.0	-	6	20	3.5	6.5 DP 4	M5 x 0.8	8	-	10	12	15.5	5	10
Ø20	5 ~ 50	50	31.5	10	36	5	M8 x 1.25	-	8	25.5	5.5	9 DP 7	M5 x 0.8	8	-	12	14	18.5	5	13
		55	32.5	12	40	5	M10 x 1.25	-	10	28	5.5	9 DP 7	M5 x 0.8	9.5	-	15	17.5	22.5	6	17
Ø32	5 ~ 100	61.5	33	16	45	7.4	M14 x 1.5	4.5	14	34	5.5	9 DP 7	1/8	9.9	14	20.5	23.5	28.5	8	22
		68	39.5	16	52	8	M14 x 1.5	5	14	40	5.5	9 DP 7	1/8	11.5	14	20.5	23.5	28.5	8	22
Ø40	5 ~ 100	74	40.5	20	64	10.5	M18 x 1.5	7	17	50	6.6	11 DP 8	1/4	11	19	26	28.5	33.5	11	27
		79.5	46	20	77	10.5	M18 x 1.5	7	17	60	9	14 DP 10.5	1/4	14	19	26	28.5	33.5	11	27
		97	53.5	25	98	12	M22 x 1.5	6	22	77	11	17.5 DP 13.5	3/8	16	26	32.5	35.5	43.5	13	32
		106.5	63	30	117	18	M26 x 1.5	6.5	27	94	11	17.5 DP 13.5	3/8	19	26	32.5	35.5	43.5	16	41
		141	93	35	142	24.5	M30 x 1.5	11	32	114	12.5	21.2 DP 18.4	3/8	24.5	26	42	45	58	18	46
		141	93	35	142	24.5	M30 x 1.5	11	32	114	12.5	21.2 DP 18.4	3/8	24.5	26	42	45	58	18	46

◆ 실린더 치수도

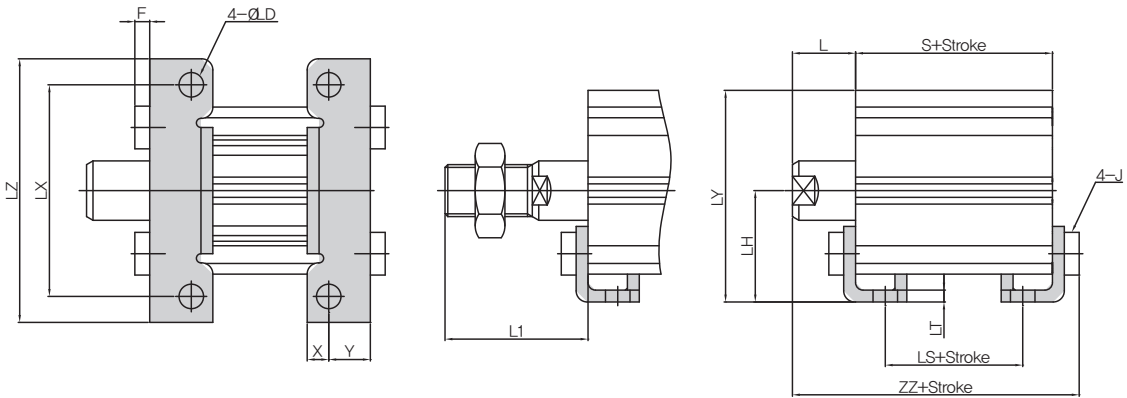
▶ 푸트형 (YQC2A LB)

(자석 비내장형) YQC2A LB- $\varnothing 12$, $\varnothing 16$, $\varnothing 20$, $\varnothing 25$ -D, DM



튜브내경 (mm)	스트로크 범위 (mm)	ZZ	S	LS	L	L1	LH	LY	ØLD	LX	LZ	X	Y	J	F	LT
$\varnothing 12$	5 ~ 30	35.3	17	5	13.5	24	17	29.5	4.5	34	44	4.5	8	M4 x 0.7	2.8	2
$\varnothing 16$		36.8	18.5	6.5	13.5	25.5	19	33.5	4.5	38	48	5	8	M4 x 0.7	2.8	2
$\varnothing 20$	5 ~ 50	41.2	19.5	7.5	14.5	28.5	24	42	6.6	48	62	5.8	9.2	M6 x 1.0	4	3.2
$\varnothing 25$		44.7	22.5	7.5	15	32.5	26	46	6.6	52	66	5.8	10.7	M6 x 1.0	4	3.2

(자석 비내장형) YQC2A LB- $\varnothing 32$, $\varnothing 40$, $\varnothing 50$, $\varnothing 63$, $\varnothing 80$, $\varnothing 100$ -D, DM

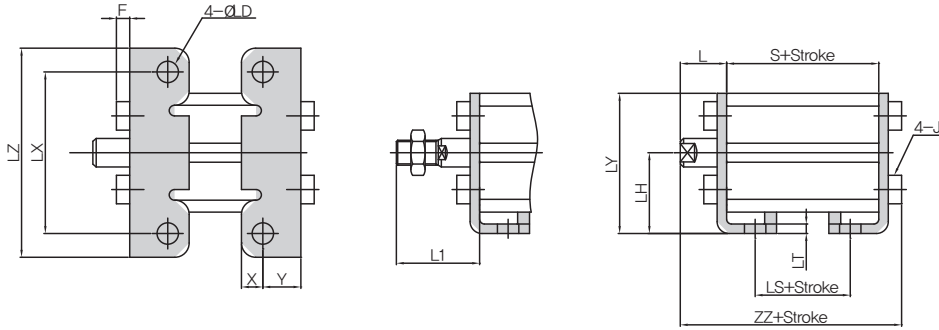


튜브내경 (mm)	스트로크 범위 (mm)	ZZ	S	LS	L	L1	LH	LY	LD	LX	LZ	X	Y	J	F	LT
$\varnothing 32$	5 ~ 30	47.2	23	7	17	38.5	30	57	6.6	57	71	5.8	11.2	M6 x 1.0	4	3.2
$\varnothing 40$		53.7	29.5	13.5	17	38.5	33	64	6.6	64	78	7	11.2	M6 x 1.0	4	3.2
$\varnothing 50$	5 ~ 50	56.7	30.5	7.5	18	43.5	39	78	9	79	95	8	14.7	M8 x 1.25	5	3.2
$\varnothing 63$		62.2	36	10	18	43.5	46	91.5	11	95	113	9	16.2	M10 x 1.5	5	3.2
$\varnothing 80$		75	43.5	13.5	20	53.5	59	114	13	118	140	11	19.5	M12 x 1.75	7	4.5
$\varnothing 100$		88	53	19	22	53.5	71	136	13	137	162	12	23	M12 x 1.75	7	6.0

◆ 실린더 치수도

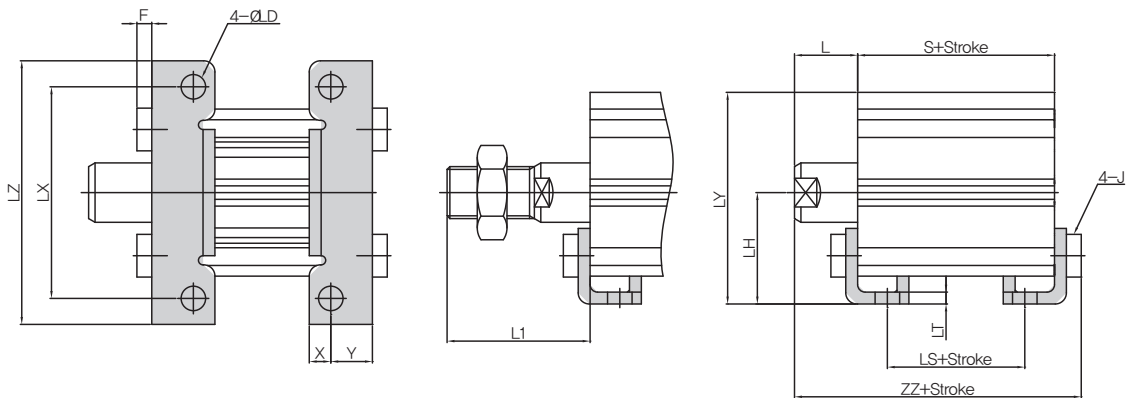
▶ 푸트형 (YCDQ2A LB)

(자석 내장형) YCDQ2A LB-Ø12 Ø16, Ø20, Ø25-D, DM



튜브내경 (mm)	스트로크 범위 (mm)	ZZ	S	LS	L	L1	LH	LY	ØLD	LX	LZ	X	Y	J	F	LT
Ø12	5 ~ 30	46,3	28	16	13,5	24	17	29,5	4,5	34	44	4,5	8	M4 x 0,7	2,8	2
Ø16		48,3	30	18,5	13,5	25,5	19	33,5	4,5	38	48	5	8	M4 x 0,7	2,8	2
Ø20	5 ~ 50	53,2	31,5	19,5	14,5	28,5	24	42	6,6	48	62	5,8	9,2	M6 x 1,0	4	3,2
Ø25		54,7	32,5	17,5	15	32,5	26	46	6,6	52	66	5,8	10,7	M6 x 1,0	4	3,2

(자석 내장형) YCDQ2A LB-Ø32, Ø40, Ø50, Ø63, Ø80, Ø100-D, DM

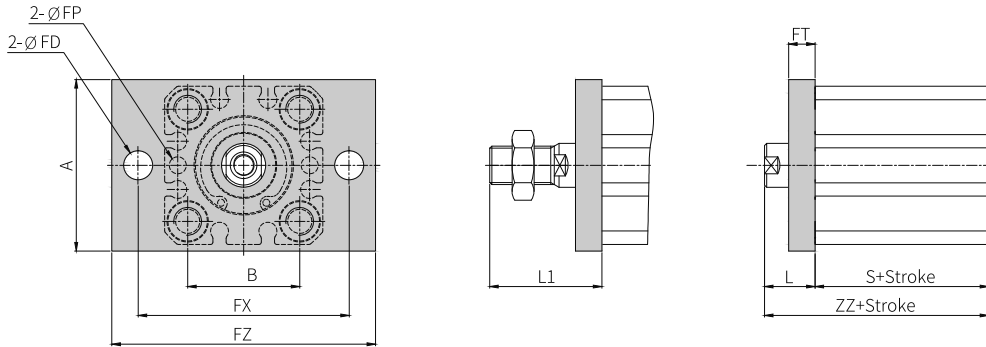


튜브내경 (mm)	스트로크 범위 (mm)	ZZ	S	LS	L	L1	LH	LY	ØLD	LX	LZ	X	Y	J	F	LT
Ø32	5 ~ 30	57,2	33	17	17	38,5	30	57	6,6	57	71	5,8	11,2	M6 x 1,0	4	3,2
Ø40		63,7	39,5	23,5	17	38,5	33	64	6,6	64	78	7	11,2	M6 x 1,0	4	3,2
Ø50	5 ~ 50	66,7	40,5	8,5	18	43,5	39	78	9	79	95	8	14,7	M8 x 1,25	5	3,2
Ø63		72,2	46	20	18	43,5	46	91,5	11	95	113	9	16,2	M10 x 1,5	5	3,2
Ø80		85	53,5	23,5	20	53,5	59	114	13	118	140	11	19,5	M12 x 1,75	7	4,5
Ø100		98	63	29	22	53,5	71	136	13	137	162	12	23	M12 x 1,75	7	6,0

◆ 실린더 치수도

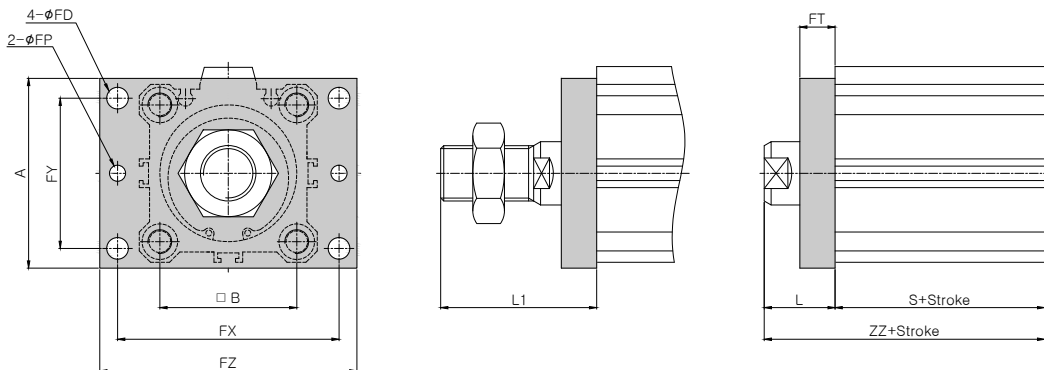
▶ 로드측 플랜지형 (YCQ2A FA)

(자석 비내장형) YCQ2A FA 2A- \varnothing 12 \varnothing 16, \varnothing 20, \varnothing 25-D, DM



튜브내경 (mm)	스트로크 범위 (mm)	ZZ	S	L	L1	FD	FP	A	B	FX	FZ	FY	FT
\varnothing 12	5 ~ 30	30.5	17	13.5	24	4.5	3.1	25	15.5	45	55	-	5.5
\varnothing 16		32	18.5	13.5	25.5	4.5	3.1	30	20	45	55	-	5.5
\varnothing 20	5 ~ 50	34	19.5	14.5	28.5	6.6	3.1	39	25.5	48	60	-	9
\varnothing 25		37.5	22.5	15	32.5	6.6	4.1	42	28	52	64	-	9

(자석 비내장형) YCQ2A FA 2A- \varnothing 32, \varnothing 40, \varnothing 50, \varnothing 63, \varnothing 80, \varnothing 100-D, DM

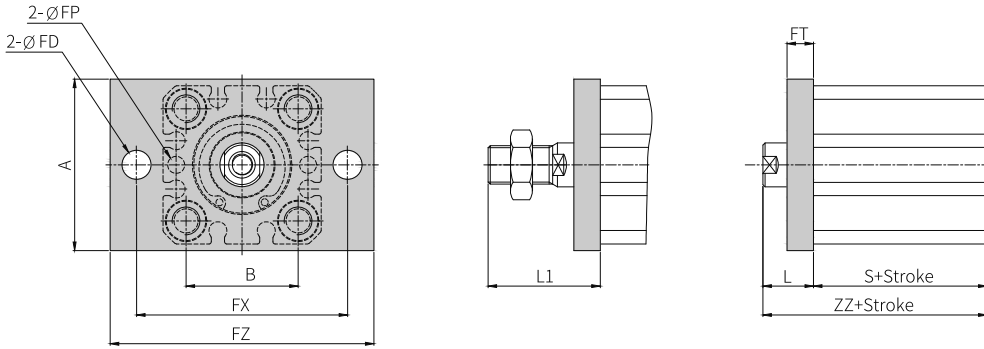


튜브내경 (mm)	스트로크 범위 (mm)	ZZ	S	L	L1	FD	FP	A	B	FX	FZ	FY	FT
\varnothing 32	5 ~ 30	40	23	17	38.5	5.5	4.1	48	34	56	65	34	8
\varnothing 40		46.5	29.5	17	38.5	5.5	4.1	54	40	62	72	40	8
\varnothing 50	5 ~ 50	48.5	30.5	18	43.5	6.6	5.1	67	50	76	89	50	9
\varnothing 63		54	36	18	43.5	9	5.1	80	60	92	108	60	9
\varnothing 80		63.5	43.5	20	53.5	11	6.1	99	77	116	134	77	11
\varnothing 100		75	53	22	53.5	11	6.1	117	94	136	154	94	11

◆ 실린더 치수도

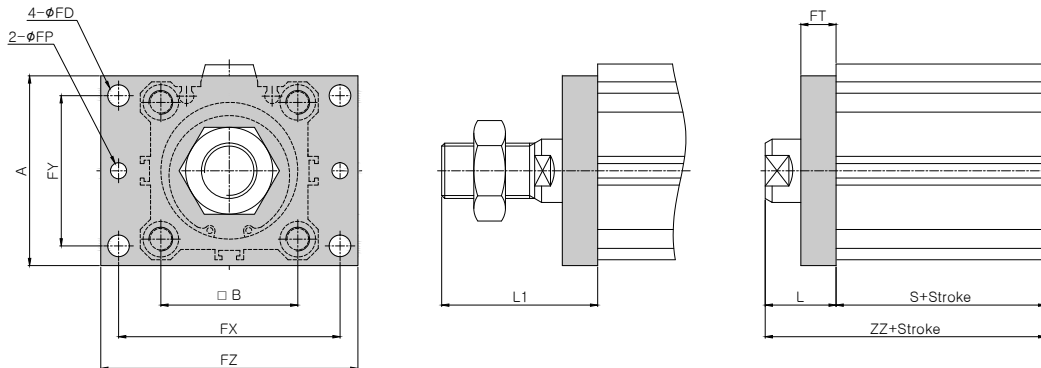
▶ 로드측 플랜지형 (YCDQ2A FA)

(자석 내장형) YCDQ2A FA- $\varnothing 12$, $\varnothing 16$, $\varnothing 20$, $\varnothing 25$ -D, DM



튜브내경 (mm)	스트로크 범위 (mm)	ZZ	S	L	L1	FD	FP	A	B	FX	FZ	FY	FT
$\varnothing 12$	5 ~ 30	41.5	28	13.5	24	4.5	3.1	25	15.5	45	55	25	5.5
$\varnothing 16$		43.5	30	13.5	25.5	4.5	3.1	30	20	45	55	30	5.5
$\varnothing 20$	5 ~ 50	46	31.5	14.5	28.5	6.6	3.1	39	25.5	48	60	39	9
$\varnothing 25$		47.5	32.5	15	32.5	6.6	4.1	42	28	52	64	42	9

(자석 내장형) YCDQ2A FA- $\varnothing 32$, $\varnothing 40$, $\varnothing 50$, $\varnothing 63$, $\varnothing 80$, $\varnothing 100$ -D, DM

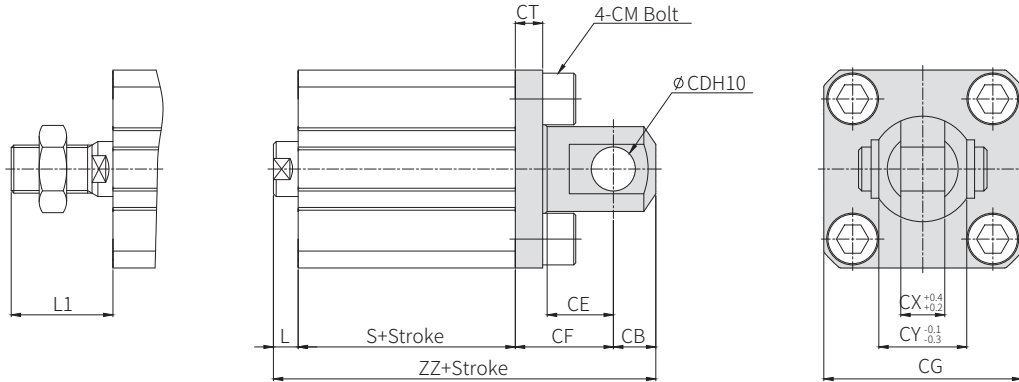


튜브내경 (mm)	스트로크 범위 (mm)	ZZ	S	L	L1	FD	FP	A	B	FX	FZ	FY	FT
$\varnothing 32$	5 ~ 30	50	33	17	38.5	5.5	4.1	48	34	56	65	34	8
$\varnothing 40$		56.5	39.5	17	38.5	5.5	4.1	54	40	62	72	40	8
$\varnothing 50$	5 ~ 50	58.5	40.5	18	43.5	6.6	5.1	67	50	76	89	50	9
$\varnothing 63$		64	46	18	43.5	9	5.1	80	60	92	108	60	9
$\varnothing 80$		73.5	53.5	20	53.5	11	6.1	99	77	116	134	77	11
$\varnothing 100$		85	63	22	53.5	11	6.1	117	94	136	154	94	11

◆ 실린더 치수도

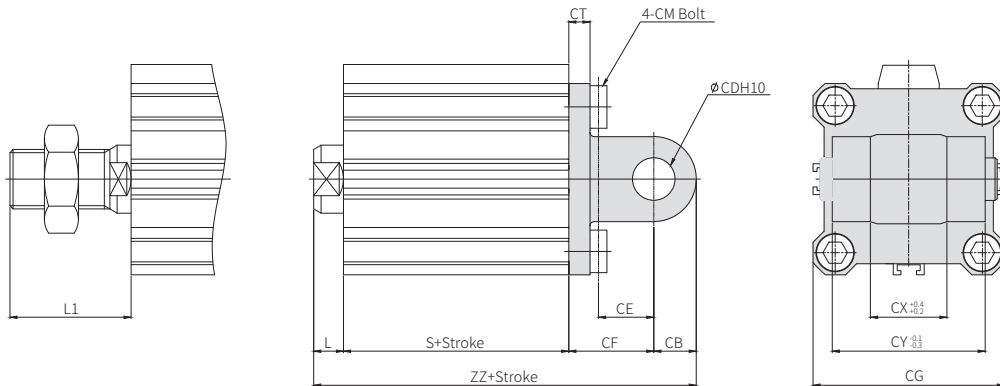
▶ 2산 클래비스형 (YCQ2A CB)

(자석 비내장형) YCQ2A CB- $\varnothing 12$, $\varnothing 16$, $\varnothing 20$, $\varnothing 25$ -D, DM



튜브내경 (mm)	스트로크 범위 (mm)	ZZ	S	L	L1	CB	CE	CF	CG	CM	CDH10	CT	CX	CY
$\varnothing 12$	5 ~ 30	40.5	17	3.5	14	6	7	14	25	M4 x 0.7	5 ^{+0.06} ₀	4	5	10
$\varnothing 16$		43	18.5	3.5	15.5	6	10	15	29	M4 x 0.7	5 ^{+0.06} ₀	4	6.5	12
$\varnothing 20$	5 ~ 50	51	19.5	4.5	18.5	9	12	18	36	M6 x 1.0	10 ^{+0.06} ₀	5	8	16
$\varnothing 25$		57.5	22.5	5	22.5	10	14	20	40	M6 x 1.0	10 ^{+0.06} ₀	5	10	20

(자석 비내장형) YCQ2A CB- $\varnothing 32$, $\varnothing 40$, $\varnothing 50$, $\varnothing 63$, $\varnothing 80$, $\varnothing 100$ -D, DM

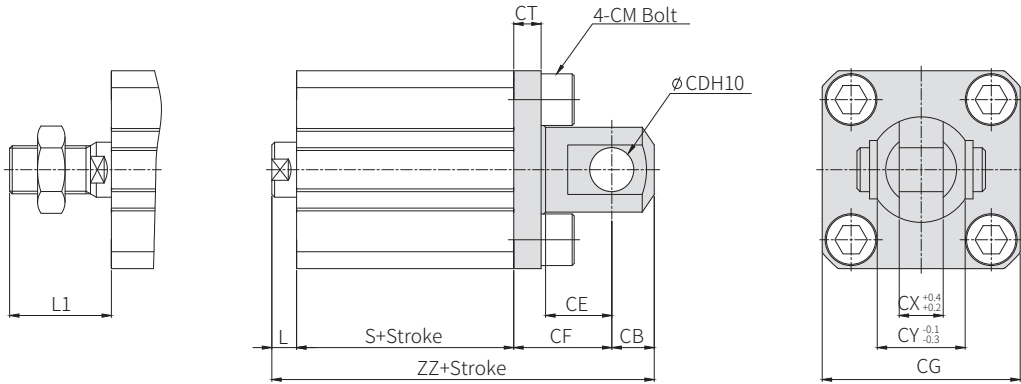


튜브내경 (mm)	스트로크 범위 (mm)	ZZ	S	L	L1	CB	CE	CF	CG	CM	CDH10	CT	CX	CY
$\varnothing 32$	5 ~ 30	60	23	7	28.5	10	14	20	45	M6 x 1.0	10 ^{+0.06} ₀	5	18	36
$\varnothing 40$		68.5	29.5	7	28.5	10	14	22	52	M6 x 1.0	10 ^{+0.06} ₀	6	18	36
$\varnothing 50$	5 ~ 50	80.5	30.5	8	33.5	14	20	28	64	M8 x 1.25	14 ^{+0.07} ₀	7	22	44
$\varnothing 63$		88	36	8	33.5	14	20	30	77	M10 x 1.5	14 ^{+0.07} ₀	8	22	44
$\varnothing 80$		109.5	43.5	10	43.5	18	27	38	98	M12 x 1.75	18 ^{+0.07} ₀	10	28	56
$\varnothing 100$		132	53	12	43.5	22	31	45	117	M12 x 1.75	22 ^{+0.084} ₀	10	32	56

◆ 실린더 치수도

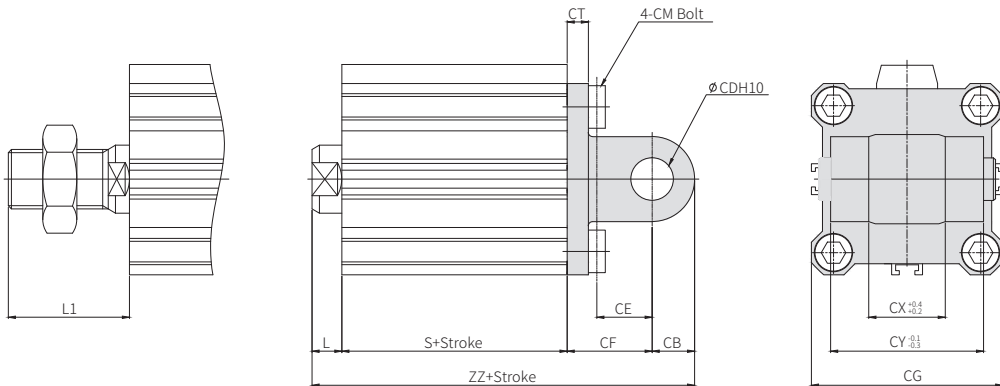
▶ 2산 클래비스형 (YCDQ2A CB)

(자석 내장형) YCDQ2A CB-Ø12 Ø16, Ø20, Ø25-D, DM



튜브내경 (mm)	스트로크 범위 (mm)	ZZ	S	L	L1	CB	CE	CF	CG	CM	CDH10	CT	CX	CY
Ø12	5 ~ 30	51.5	28	3.5	14	6	7	14	25	M4 x 0.7	5 ^{+0.05} ₀	4	5	10
Ø16		54.5	30	3.5	15.5	6	10	15	29	M4 x 0.7	5 ^{+0.05} ₀	4	6.5	12
Ø20	5 ~ 50	63	31.5	4.5	18.5	9	12	18	36	M6 x 1.0	10 ^{+0.06} ₀	5	8	16
Ø25		67.5	32.5	5	22.5	10	14	20	40	M6 x 1.0	10 ^{+0.06} ₀	5	10	20

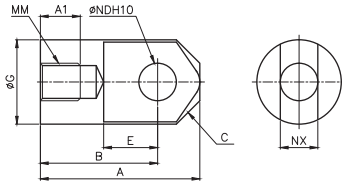
(자석 내장형) YCDQ2A CB-Ø32, Ø40, Ø50, Ø63, Ø80, Ø100-D, DM



튜브내경 (mm)	스트로크 범위 (mm)	ZZ	S	L	L1	CB	CE	CF	CG	CM	CDH10	CT	CX	CY
Ø32	5 ~ 30	70	33	7	28.5	10	14	20	45	M6 x 1.0	10 ^{+0.06} ₀	5	18	36
Ø40		78.5	39.5	7	28.5	10	14	22	52	M6 x 1.0	10 ^{+0.06} ₀	6	18	36
Ø50	5 ~ 50	90.5	40.5	8	33.5	14	20	28	64	M8 x 1.25	14 ^{+0.07} ₀	7	22	44
Ø63		98	46	8	33.5	14	20	30	77	M10 x 1.5	14 ^{+0.07} ₀	8	22	44
Ø80		119.5	53.5	10	43.5	18	27	38	98	M12 x 1.75	18 ^{+0.07} ₀	10	28	56
Ø100		142	63	12	43.5	22	31	45	117	M12 x 1.75	22 ^{+0.084} ₀	10	32	56

◆ 실린더 치수도

▶ 1산 너클조인트

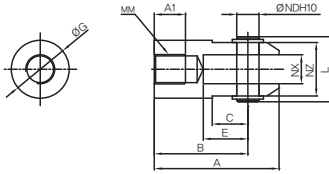


재질:탄소강(단위:mm)

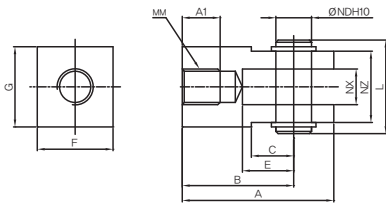
튜브내경 (mm)	품번	A	B	C	E	G(Ø)	MM	A1	NDH10	NX
Ø12	YCQ12-I	21.5	16	2.5	7	12	M5 x 0.8	6	5 ^{+0.048} ₀	5 ^{-0.2} _{-0.4}
Ø16	YCQ16-I	32	25	3	14	14	M6 x 1.0	8	5 ^{+0.048} ₀	6.5 ^{-0.2} _{-0.4}
Ø20	YCQ20-I	34	25	4	11.5	18	M8 x 1.25	8.5	8 ^{+0.068} ₀	8 ^{-0.2} _{-0.4}
Ø25	YCQ25-I	41	30	5	14	23	M10 x 1.25	10.5	10 ^{+0.068} ₀	10
Ø32, Ø40	YCQ32-I	42	30	6	14	22	M14 x 1.5	14	10 ^{+0.068} ₀	18 ^{-0.3} _{-0.5}
Ø50, Ø63	YCQ50-I	56	40	6.5	20	28	M18 x 1.5	18	14 ^{+0.070} ₀	22 ^{-0.3} _{-0.5}
Ø80	YCQ80-I	71	50	8	27	38	M22 x 1.5	21	18 ^{+0.070} ₀	28 ^{-0.3} _{-0.5}
Ø100	YCQ100-I	79	55	10	31	44	M26 x 1.5	21	22 ^{+0.084} ₀	32 ^{-0.3} _{-0.5}

▶ 2산 너클조인트

Ø12~Ø16



Ø20, Ø25

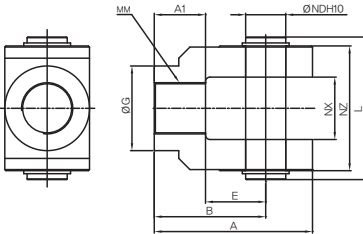


재질:Ø12~Ø25-탄소강, Ø32~Ø100-주철

(단위:mm)

튜브내경 (mm)	품번	A	B	C	E	G(Ø)	F	MM	A1	NDH10	NX	NZ	L
Ø12	YCQ12-Y	21.5	16	6	7	12	-	M5 x 0.8	6	5 ^{+0.048} ₀	5 ^{-0.2} _{-0.4}	10	14.6
Ø16	YCQ16-Y	28	21	8	10	14	-	M6 x 1.0	7	5 ^{+0.048} ₀	6.5 ^{-0.2} _{-0.4}	12	16.6
Ø20	YCQ20-Y	34	25	9.5	11.5	18	16	M8 x 1.25	8.5	8 ^{+0.068} ₀	8 ^{-0.2} _{-0.4}	16	21
Ø25	YCQ25-Y	41	30	12	14	22	20	M10 x 1.25	10.5	10 ^{+0.068} ₀	10 ^{-0.2} _{-0.4}	20	25.6
Ø32, Ø40	YCQ32-Y	42	30	-	14	22	-	M14 x 1.5	16	10 ^{+0.068} ₀	18 ^{-0.3} _{-0.5}	36	41.6
Ø50, Ø63	YCQ50-Y	56	40	-	20	28	-	M18 x 1.5	20	14 ^{+0.070} ₀	22 ^{-0.3} _{-0.5}	44	50.6
Ø80	YCQ80-Y	71	50	-	27	38	-	M22 x 1.5	23	18 ^{+0.070} ₀	28 ^{-0.3} _{-0.5}	56	64
Ø100	YCQ100-Y	79	55	-	31	44	-	M26 x 1.5	24	22 ^{+0.084} ₀	32 ^{-0.3} _{-0.5}	64	72

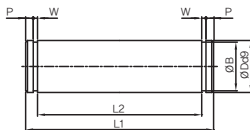
Ø32~Ø100



▶ 2산 너클조인트 핀 / 2산 클레비스 핀

재질:탄소강

(단위:mm)



튜브내경 (mm)	품번	NDH10	L1	L2	P	W	B
Ø12	QP-016	5 ^{-0.03} _{-0.06}	16.6	12.2	1.5	0.7	4.7
Ø16	QP-020	8 ^{-0.040} _{-0.076}	21	16.2	1.5	0.9	7.5
Ø20	QP-025	10 ^{-0.040} _{-0.076}	25.6	20.2	1.55	1.15	9.4
Ø25	QP-032	10 ^{-0.040} _{-0.076}	41.6	36.2	1.55	1.15	9.4
Ø32, Ø40	QP-050	14 ^{-0.050} _{-0.076}	50.6	44.2	2.05	1.15	13.1
Ø50, Ø63	QP-080	18 ^{-0.050} _{-0.093}	64	56.2	2.55	1.35	16.8
Ø80	QP-100	22 ^{-0.065} _{-0.117}	72	64.2	2.55	1.35	20.8