

Coupler

Ace Coupler

Compact Ace Coupler

Auto Ace Coupler

Korea Type Coupler

Minor Coupler

HP Coupler

Mold Coupler

Cam-Lock Coupler

KOREA TYPE COUPLER

용도 및 특징

- 압축공기의 배관 연결시에 사용합니다.
- Air공구(드라이브, 임팩트 등)에 장착하여 사용합니다.
- 원터치형 체결방식입니다.
- 홀(Hole)에 자동개폐밸브를 내장한 편로 개폐형 카플러입니다.
- 공기압 공구의 호스연결, 공자의 공기 배관용 등 폭 넓게 사용이 가능합니다.

사양

사용유체	Air
재 질	Steel (Chrome Plated)
사용압력	10Kgf/cm ² (1000kPa)
최대사용압력	15Kgf/cm ² (1500kPa)



주문형식

HC F 22

① ② ③

① 품명

HC	HH
Plug	Socket

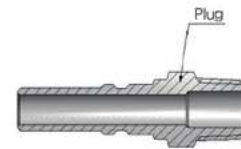
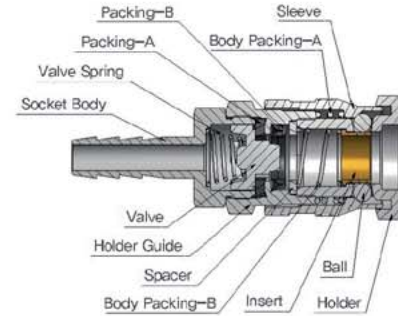
② 형식

H	Hose Stem
M	Male Thread
F	Female Thread
N	Hose Nut Type

③ 나사의 크기

Size	22	23	24
H	Ø09	Ø11	Ø14.8
M	R1/4	R3/8	R1/2
F	RC1/4	RC3/8	RC1/2
Size	21	23	24
H	Ø8×5	Ø10×6.5	Ø12×8

구조도



⚠ 주의

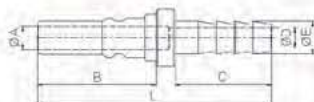
- 제품을 임의로 변경하여 사용하지 마십시오.
- 과도한 힘으로 제품을 체결할 시에는 나사 및 제품이 손상될 수 있으므로 주의를 요합니다.
- 시공 후 누설여부를 확인한 후에 사용하여 주십시오.

Korea Type Coupler



HCH

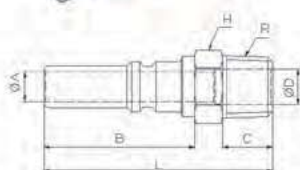
Plug Nipple



CODE	MODEL	L	ØA	B	C	ØD	ØE	W.G(g)	Q'ty/ Inbox
599110301002	HCH22 STEEL	65,3	6,5	33,0	27,0	5,5	9,0	29,5	50
599110301003	HCH23 STEEL	67,3	6,5	33,0	29,0	6,0	11,0	35,7	50
599110301004	HCH24 STEEL	71,3	6,5	33,0	33,0	8,0	14,8	46,2	50

HCM

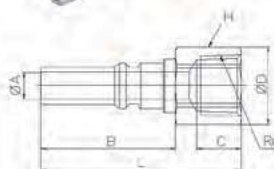
Plug Male



CODE	MODEL	L	ØA	B	C	ØD	H	R	W.G(g)	Q'ty/ Inbox
599120300102	HCM22 STEEL	50,0	6,5	33,0	11,0	7,8	14,0	R1/4	26,4	100
599120300103	HCM23 STEEL	61,5	6,5	33,0	12,0	9,0	17,0	R3/8	37,2	50
599120300104	HCM24 STEEL	65,0	6,5	33,0	15,0	14,0	21,0	R1/2	52,2	25

HCF

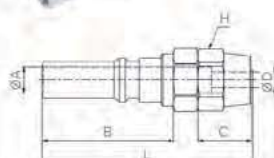
Plug Female



CODE	MODEL	L	ØA	B	C	ØD	H	RC	W.G(g)	Q'ty/ Inbox
599130300202	HCF22 STEEL	49,0	6,5	33,0	11,0	19,0	17,0	Rc1/4	31,6	50
599130300203	HCF23 STEEL	51,5	6,5	33,0	12,0	23,0	21,0	Rc3/8	46,4	50
599130300204	HCF24 STEEL	53,0	6,5	33,0	15,0	27,8	25,0	Rc1/2	58,7	25

HCN

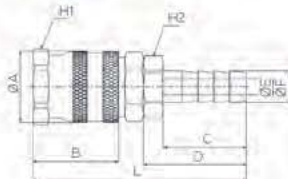
Plug Nut



CODE	MODEL	L	ØA	B	C	ØD	H	W.G(g)	Q'ty/ Inbox
599140302001	HCN21 STEEL	59,5	6,5	33,0	13,6	3,7	14,0	31,1	50
599140302003	HCN23 STEEL	61,5	6,5	33,0	15,0	4,0	15,0	34,9	50
599140302004	HCN24 STEEL	64,5	6,5	33,0	17,3	5,8	19,0	56,2	25

HHH

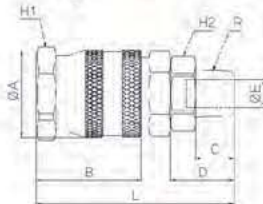
Socket Nipple



CODE	MODEL	L	ΦA	B	C	D	ØE	ØF	H1	H2	W.G(g)	Q'ty/ Inbox
599010301002	HHH22 STEEL	72.5	25.0	30.0	27.0	34.0	5.5	9.0	24.0	19.0	93.8	25
599010301003	HHH23 STEEL	74.5	25.0	30.0	29.0	36.0	7.0	11.0	24.0	19.0	99.9	25
599010301004	HHH24 STEEL	78.5	25.0	30.0	33.0	40.0	8.0	14.8	24.0	19.0	114.6	25

HHM

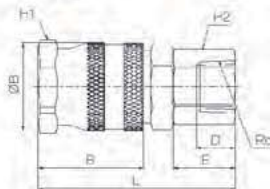
Socket Male



CODE	MODEL	L	ΦA	B	C	D	ØE	H1	H2	R	W.G(g)	Q'ty/ Inbox
599020300102	HHM22 STEEL	56.5	25.0	30.0	11.0	18.0	7.8	24.0	19.0	R1/4	94.4	25
599020300103	HHM23 STEEL	57.5	25.0	30.0	12.0	19.0	9.0	24.0	19.0	R3/8	98.3	25
599020300104	HHM24 STEEL	60.5	25.0	30.0	15.0	22.0	14.0	24.0	21.0	R1/2	146.0	25

HHF

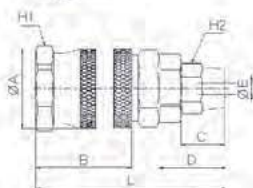
Socket Female



CODE	MODEL	L	ΦA	B	C	D	H1	H2	RC	W.G(g)	Q'ty/ Inbox
599030300202	HHF22 STEEL	56.0	25.0	30.0	11.0	17.5	24.0	19.0	Rc1/4	102.8	25
599030300203	HHF23 STEEL	57.0	25.0	30.0	12.0	18.5	24.0	19.0	Rc3/8	105.1	25
599030300204	HHF24 STEEL	59.5	25.0	30.0	15.0	21.0	24.0	25.0	Rc1/2	120.1	25

HHN

Socket Nut



CODE	MODEL	L	ΦA	B	C	D	ΦE	H1	H2	W.G(g)	Q'ty/ Inbox
599040302001	HHN21 STEEL	59.5	25.0	30.0	13.6	14.0	3.7	24.0	14.0	97.5	25
599040302003	HHN23 STEEL	61.5	25.0	30.0	15.0	16.0	4.0	24.0	15.0	100.2	25
599040302004	HHN24 STEEL	64.5	25.0	30.0	17.3	19.0	5.8	24.0	19.0	112.3	25

