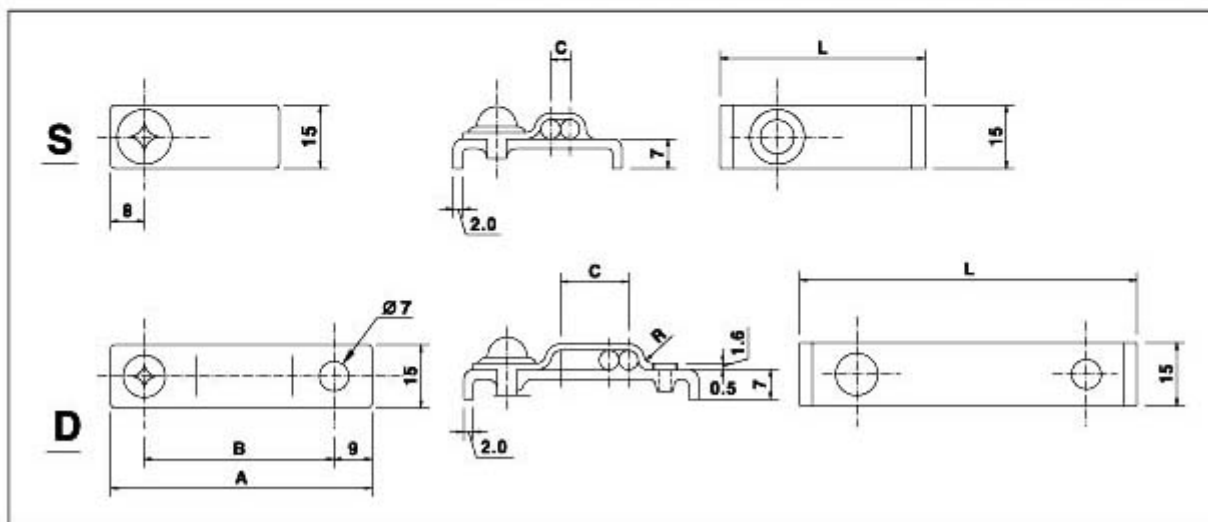
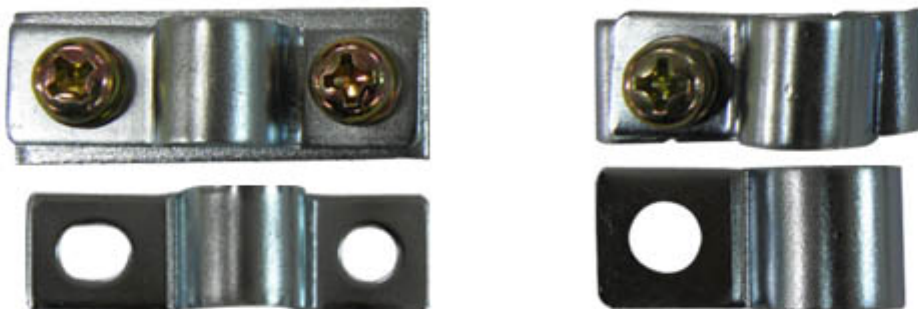


■ FIXING CLAMPS

This type clamps are used to fix small sized tubings



PART NAME		TYPE	TUBINGS	A	B	C	L	R	
S W F C	S	a1	$\phi 4 \times 1$	23	-	-	40	2	
		a2	$\phi 4 \times 2$	27	-	4	40	2	
		a3	$\phi 4 \times 3$	31	-	8	40	2	
	D	a4	$\phi 4 \times 4$	56	40	12	62	2	
	S	A1	$\phi 6 \times 1$	25	-	-	40	3	
		A2	$\phi 6 \times 2$	31	-	6	40	3	
	D	A3	$\phi 6 \times 3$	56	40	12	62	3	
		A4	$\phi 6 \times 4$	64	48	18	70	3	
		A5	$\phi 6 \times 5$	72	56	24	78	3	
		A6	$\phi 6 \times 6$	78	62	30	84	3	
	S	B1	$\phi 8 \times 1$	25	-	-	40	4	
		B2	$\phi 8 \times 2$	32	-	8	40	4	
	D	B3	$\phi 8 \times 3$	64	48	16	70	4	
		B4	$\phi 8 \times 4$	72	56	24	73	4	
		B5	$\phi 8 \times 5$	78	62	32	84	4	
		B6	$\phi 8 \times 6$	88	72	40	94	4	
		B7	$\phi 8 \times 7$	101	85	48	107	4	
		B8	$\phi 8 \times 8$	108	92	56	114	4	
	S	D1	$\phi 10 \times 1$	29	-	-	40	5	
		D	D2	$\phi 10 \times 2$	64	48	10	70	5
			D3	$\phi 10 \times 3$	72	56	20	78	5
			D4	$\phi 10 \times 4$	78	62	30	84	5
			D5	$\phi 10 \times 5$	88	72	40	94	5
			D6	$\phi 10 \times 6$	101	85	50	107	5
			D7	$\phi 10 \times 7$	108	92	60	114	5
			D8	$\phi 10 \times 8$	118	102	70	122	5
	S	E1	$\phi 12 \times 1$	32	-	-	40	6	
		D	E2	$\phi 12 \times 2$	64	48	12	70	6
E3			$\phi 12 \times 3$	78	62	24	84	6	
E4			$\phi 12 \times 4$	88	72	36	94	6	
E5			$\phi 12 \times 5$	101	85	48	107	6	
E6			$\phi 12 \times 6$	118	102	60	122	6	
S	G1	$\phi 15 \times 1$	56	-	-	62	7.5		
	D	G2	$\phi 15 \times 2$	72	56	15	78	7.5	
		G3	$\phi 15 \times 3$	88	72	30	94	7.5	
		G4	$\phi 15 \times 4$	101	85	45	107	7.5	

All dimensions are in millimeters unless otherwise specified. All intermediate size are available on request.